

PITT STATE PLAYER PROFILES

PITT STATE PLAYER PROFILES



RODNEY GRACE

6-6 • 195 • Senior-1L • Forward
Omaha, Neb./Des Moines Area Community College

1

General: Second-year player... a talented forward who is primed for a big senior season... an All-MIAA caliber performer... a hard worker who improved his shooting skills in the off-season... expected to be a key member of the PSU frontcourt again this winter.

In 2008-09: Started 23 of 26 games played... averaged 10.2 points and 5.7 rebounds per game... shot 50.8 percent from the field for the season, converting 98 of 193 attempts... logged three double-doubles on the season... scored a season-best 23 points in a road game against No. 10 Missouri Southern (Jan. 3)... had 22 points and 10 rebounds vs. Neb.-Omaha (Jan. 21)... logged a double-double with 10 points and a season-high 11 rebounds vs. Truman (Jan. 28)... enjoyed three 20-point scoring nights on the season.

In Junior College: Spent two seasons at Des Moines (Iowa) Area Community College... a two-time All-Conference and All-Region performer... averaged 15 points and six rebounds per game as a sophomore... helped the Bears post a 56-11 record during his two seasons.

In High School: A second-team All-State performer as a senior at Omaha Central High School, helping the Eagles to a 29-4 record and a state title his senior season... averaged 15 points and 10 rebounds per game that year.

Personal: Born October 27, 1987... son of Herman and Janice Flowers... a general studies major.

Grace's Game-by-Game Stats

2008-09						
DATE	OPPONENT	FGs	FTs	PTS	REB	
11/21	vs. Lincoln	2-3	1-3	5	4	
11/22	vs. Mid-America Christian	1-3	1-3	3	5	
11/24	SAINT MARY (Kan.)	4-9	4-8	12	9	
11/28	EVANGEL	2-5	2-4	6	11	
11/29	HENDERSON STATE	1-3	2-5	4	3	
12/3	at Missouri Western	1-3	0-0	2	1	
12/6	TRUMAN	3-8	2-5	8	3	
12/8	NEWMAN	4-8	4-6	12	5	
12/13	SOUTHWEST BAPTIST	5-9	2-4	12	3	
12/21	SOUTHWESTERN		DNP			
12/29	at Central Missouri	1-2	3-6	5	5	
12/31	NORTHWEST MISSOURI	3-8	1-1	7	5	
1/3	at Missouri Southern	10-14	3-5	23	7	
1/10	EMPORIA STATE	6-9	2-7	14	5	
1/14	at Washburn	2-6	3-6	7	4	
1/17	at Fort Hays State	4-9	2-6	10	5	
1/21	NEBRASKA-OMAHA	10-21	2-2	22	10	
1/24	MISSOURI WESTERN	4-8	2-2	10	8	
1/28	at Truman	5-9	0-0	10	11	
1/31	CENTRAL MISSOURI	1-5	5-8	7	6	
2/3	at Southwest Baptist	2-5	3-4	7	3	
2/7	at Northwest Missouri	3-5	11-14	17	4	
2/11	MISSOURI SOUTHERN	8-12	5-5	21	5	
2/18	at Emporia State	5-6	1-2	11	10	
2/21	WASHBURN	1-6	3-6	5	5	
2/26	FORT HAYS STATE	7-12	2-6	16	8	
2/28	at Nebraska-Omaha	3-5	2-3	8	4	

Grace's Career Highs

Points: 23

at Missouri Southern, 1/3/09

Rebounds: 11 (most recent)

at Truman, 1/28/09

Assists: 3

vs. Newman, 12/8/08

Steals: 2 (most recent)

vs. Nebraska-Omaha, 1/21/09

Grace's Statistics at Pittsburg State

Year	G/GS	FGs	Pct	3ptrs	Pct	FTs	Pct.	Pts	Avg	Reb	Avg	Ast	Blk	Stl
2008-09	26/23	98-193	.508	0-0	.000	68-121	.562	264	10.2	149	5.7	13	12	12



PITT STATE PLAYER PROFILES



SPENCER MAGANA

6-4 • 192 • Senior-3L • Guard
Dewey, Okla./Dewey High School

2

General: Fourth-year player... a talented backcourt player who has evolved into one of the premier players in the MIAA... an All-MIAA caliber performer who is primed for a big senior season... an accurate perimeter shooter with 108 career 3-point field goals to his credit... a veteran player with 39 career starts... expected to play a prominent role in the Gorillas' backcourt again this winter.

In 2008-09: Started 26 of 27 games played... averaged 12.4 points, 2.8 rebounds and 2.8 assists per game... converted 39.6 percent of his shots from the field (113 of 285)... hit a team-leading 56 3-pointers (.366, 56 of 153)... also shot 76.1 percent from the foul line (54 of 71)... scored in double figures in 16 games... poured in a career-high 31 points, including six treys, vs. Washburn (Feb. 21)... made four or more 3-pointers in seven games... scored 27 points vs. Emporia State (Jan. 10).

In 2007-08: Saw action in all 28 games, including 10 starts... averaged 8.4 points, 2.4 rebounds and 1.5 assists per game... converted 38.9 percent of his shots from the field (77 of 198), 34.3 percent of his shots beyond the 3-point arc (37 of 108) and 81.1 percent of his free throws (43 of 53)... scored in double figures 10 times, twice tallying a season-best 18 points - vs. Cameron (Nov. 17) and vs. Missouri Western (Jan. 23)... averaged 13.8 points per game in the final five contests of the season... had 12 points and a career-high six assists in a home win vs. Truman (Mar. 1).

In 2006-07: Saw action in 26 games, including three starts as a true freshman... averaged 3.1 points and 0.8 rebounds per game... converted 38.2 percent of his shots from the field (29 of 76) and 33.3 percent of his shots beyond the 3-point arc (15 of 45)... scored season-high 13 points and dished out a season-best three assists vs. Rhema Bible College (Dec. 7)... hit his first four 3-point field goals of the season, including a 3-for-3 night vs. Evangel (Nov. 24).

In High School: An Oklahoma All-State, All-Class performer as a senior at Dewey (Okla.) High School... averaged 18.3 points, 4.2 rebounds and 3.0 assists per game for the Bulldogs... helped DHS to a pair of district, regional and area titles and a 44-11 combined record his final two seasons.

Personal: Born March 11, 1987... son of Travis Magana and Marcia Coleman... a marketing major.

Year	G/GS	FGs	Pct	3ptrs	Pct	FTs	Pct.	Pts	Avg	Reb	Avg	Ast	Blk	Stl
2006-07	26/3	29-76	.382	15-45	.333	7-10	.700	80	3.1	20	0.8	17	1	11
2007-08	28/10	77-198	.389	37-108	.343	43-53	.811	234	8.4	66	2.4	42	13	24
2008-09	27/26	113-285	.396	56-153	.366	54-71	.761	336	12.4	75	2.8	76	4	23
Totals	81/39	219-559	.392	108-306	.353	104-134	.776	650	8.0	161	2.0	129	18	58

2008-09		FGs	FTs	PTS	REB
11/21	vs. Lincoln	5-7	1-4	15	5
11/22	vs. Mid-America Christian	5-11	2-2	16	5
11/24	SAINT MARY (Kan.)	0-7	0-1	0	4
11/28	EVANGEL	5-11	2-3	16	2
11/29	HENDERSON STATE	6-15	7-8	20	2
12/3	at Missouri Western	3-7	4-4	12	4
12/6	TRUMAN	5-11	6-6	16	0
12/8	NEWMAN	6-11	1-2	16	3
12/13	SOUTHWEST BAPTIST	4-16	3-3	12	2
12/21	SOUTHWESTERN	6-9	0-0	16	3
12/29	at Central Missouri	4-16	0-0	9	1
12/31	NORTHWEST MISSOURI	3-11	0-0	8	5
1/3	at Missouri Southern	1-4	2-2	4	2
1/10	EMPORIA STATE	10-22	3-3	27	4
1/14	at Washburn	3-10	0-0	8	3
1/17	at Fort Hays State	4-8	0-0	9	2
1/21	NEBRASKA-OMAHA	3-9	0-0	9	1
1/24	MISSOURI WESTERN	6-10	1-3	16	1
1/28	at Truman	5-10	0-1	10	1
1/31	CENTRAL MISSOURI	1-8	3-4	5	5
2/3	at Southwest Baptist	2-11	0-0	5	4
2/7	at Northwest Missouri	6-9	1-2	17	3
2/11	MISSOURI SOUTHERN	2-5	3-4	9	2
2/18	at Emporia State	2-8	0-0	6	2
2/21	WASHBURN	9-13	7-10	31	2
2/26	FORT HAYS STATE	3-14	6-6	12	1
2/28	at Nebraska-Omaha	4-12	2-3	12	5

Points: 31	vs. Washburn, 2/21/09
Rebounds: 5 (most recent)	at Nebraska-Omaha, 2/28/09
Assists: 6 (most recent)	vs. Nebraska-Omaha, 1/21/09
Steals: 4	vs. Emporia State, 1/10/09

PITT STATE PLAYER PROFILES

PITT STATE PLAYER PROFILES



HENRY ROGERS

6-7 • 195 • Senior-1L • Forward
Hutchinson, Kan./Hutchinson Community College

34

General: Second-year player... a hard worker who has evolved into a frontline performer for the Gorillas... an active forward who has improved his shooting skills during the off-season... expected to be an impact player for the Gorillas this season.

In 2008-09: Saw action in 25 games, including two starts... averaged 2.6 points and 2.5 rebounds per game in 11.0 minutes of action... converted 42.6 percent of his shots from the field (23 of 54) and 62.5 percent of his free throw attempts (20 of 32)... scored a season-high 13 points vs. Neb.-Omaha (Jan. 21)... pulled down a season-best seven rebounds vs. Truman (Jan. 28).

In Junior College: Spent two seasons at Hutchinson Community College... averaged 5.5 points and 7.3 rebounds per game as a sophomore for the Blue Dragons... also dished out 32 assists and blocked 16 shots... helped HCC to a 23-9 overall record last year.

In High School: A first-team All-Conference performer as a senior at Hutchinson High School in 2006, averaging 10 points and six rebounds per game.

Personal: Born July 24, 1988... son of Susan Rogers... a physical education major.

Rogers' Game-by-Game Stats

2008-09						
DATE	OPPONENT	FGs	FTs	PTS	REB	
11/21	vs. Lincoln	3-5	0-0	6	3	
11/22	vs. Mid-America Christian	1-3	2-2	4	2	
11/24	SAINT MARY (Kan.)	0-1	0-0	0	0	
11/28	EVANGEL	2-3	0-3	4	4	
11/29	HENDERSON STATE	0-0	0-0	0	0	
12/3	at Missouri Western	0-0	0-0	0	2	
12/6	TRUMAN	1-3	2-2	4	0	
12/8	NEWMAN	0-0	0-0	0	0	
12/13	SOUTHWEST BAPTIST	0-2	0-0	0	2	
12/21	SOUTHWESTERN	2-3	3-5	7	6	
12/29	at Central Missouri	0-1	0-2	0	4	
12/31	NORTHWEST MISSOURI			DNP		
1/3	at Missouri Southern	0-1	0-0	0	2	
1/10	EMPORIA STATE			DNP		
1/14	at Washburn	1-1	0-0	2	0	
1/17	at Fort Hays State	0-1	0-0	0	1	
1/21	NEBRASKA-OMAHA	4-7	5-7	13	5	
1/24	MISSOURI WESTERN	0-1	0-0	0	5	
1/28	at Truman	2-5	0-0	4	7	
1/31	CENTRAL MISSOURI	2-3	0-0	4	2	
2/3	at Southwest Baptist	0-2	1-2	1	4	
2/7	at Northwest Missouri	1-2	2-3	4	2	
2/11	MISSOURI SOUTHERN	0-0	0-0	0	0	
2/18	at Emporia State	0-0	0-0	0	0	
2/21	WASHBURN	1-3	1-2	3	1	
2/26	FORT HAYS STATE	1-3	2-2	4	7	
2/28	at Nebraska-Omaha	2-4	2-2	6	3	

Rogers' Career Highs

Points: 13

vs. Nebraska-Omaha, 1/21/09

Rebounds: 7 (most recent)

vs. Fort Hays State, 2/26/09

Assists: 3

vs. Fort Hays State, 2/26/09

Steals: 2 (most recent)

vs. Southwestern College, 12/21/08

Rogers' Statistics at Pittsburg State

Year	G/GS	FGs	Pct	3ptrs	Pct	FTs	Pct.	Pts	Avg	Reb	Avg	Ast	Blk	Stl
2008-09	25/2	23-54	.426	0-3	.000	20-32	.625	66	2.6	62	2.5	12	2	12



PITT STATE PLAYER PROFILES



SETH BURRIS

6-7 • 235 • Junior-2L • Forward
Parsons, Kan./Labette County High School

42

General: Fourth-year player... a promising frontcourt prospect who continues to improve with experience... trying to bounce back from a season-ending knee injury suffered during the 2008-09 season... figures to be a key contributor to the Gorillas' frontcourt cast if healthy this winter.

In 2008-09: Saw action in 16 games, including four starts... averaged 4.8 points and 3.6 rebounds per game... converted 59.6 percent of his shots from the field (31 of 52) and 52.0 percent of his free throws (13 of 25) on the season... scored a career-high 11 points in a home win vs. Southwestern College (Dec. 21)... twice pulled down a career-best seven rebounds, vs. Evangel (Nov. 28) and vs. Southwestern... suffered season-ending knee injury on the road vs. Fort Hays State (Jan. 17).

In 2007-08: Saw action in 18 games in a reserve role for the Gorillas... averaged 1.7 points and 1.4 rebounds per game in just under five minutes of action per outing... had season highs of seven points and five rebounds in his Pitt State debut vs. Robert Morris-Springfield (Nov. 16)... also contributed six points in a home win vs. Southwestern College (Dec. 29)... converted 90.9 percent of his free throws (10 of 11) on the season.

In 2006-07: Redshirt season.

In High School: A two-time Kansas Class 4A All-State performer at Labette County High School... earned second-team All-State honors his senior year, averaging 14.2 points, 9.6 rebounds and 1.4 blocked shots per game for the Grizzlies... a two-time unanimous first-team All-SEK League performer... helped LCHS to a 37-10 combined record his final two prep years.

Personal: Born November 12, 1987... son of Bill Burris and Barbara Ritter... a physical education major.

Burris' Statistics at Pittsburg State

Year	G/GS	FGs	Pct	3ptrs	Pct	FTs	Pct.	Pts	Avg	Reb	Avg	Ast	Blk	Stl
2007-08	18/0	10-23	.435	0-4	.000	10-11	.909	30	1.7	26	1.4	1	2	4
2008-09	16/4	31-52	.596	2-6	.333	13-25	.520	77	4.8	57	3.6	4	3	9
Totals	34/4	41-75	.547	2-10	.200	23-36	.639	107	3.1	83	2.4	5	5	13

Burris' Game-by-Game Stats

		2008-09			
DATE	OPPONENT	FGs	FTs	PTS	REB
11/21	vs. Lincoln	0-0	0-0	0	4
11/22	vs. Mid-America Christian	2-2	1-1	5	2
11/24	SAINT MARY (Kan.)	2-6	1-2	6	4
11/28	EVANGEL	2-3	0-0	4	7
11/29	HENDERSON STATE	0-2	0-0	0	5
12/3	at Missouri Western	2-2	0-0	4	5
12/6	TRUMAN	2-2	0-0	4	2
12/8	NEWMAN	3-5	1-5	7	5
12/13	SOUTHWEST BAPTIST	3-4	1-2	7	3
12/21	SOUTHWESTERN	3-5	5-6	11	7
12/29	at Central Missouri	2-3	1-2	6	4
12/31	NORTHWEST MISSOURI	2-3	1-2	5	0
1/3	at Missouri Southern	4-4	0-0	8	4
1/10	EMPORIA STATE	0-3	0-0	0	2
1/14	at Washburn	1-4	2-4	4	3
1/17	at Fort Hays State	3-4	0-0	6	0
1/21	NEBRASKA-OMAHA			DNP	
1/24	MISSOURI WESTERN			DNP	
1/28	at Truman			DNP	
1/31	CENTRAL MISSOURI			DNP	
2/3	at Southwest Baptist			DNP	
2/7	at Northwest Missouri			DNP	
2/11	MISSOURI SOUTHERN			DNP	
2/18	at Emporia State			DNP	
2/21	WASHBURN			DNP	
2/26	FORT HAYS STATE			DNP	
2/28	at Nebraska-Omaha			DNP	

Burris' Career Highs

Points: 11

vs. Southwestern College, 12/21/08

Rebounds: 7 (most recent)

vs. Southwestern College, 12/21/08

Assists: 1 (most recent)

at Fort Hays State, 1/17/09

Steals: 4

vs. Southwestern College, 12/21/08

PITT STATE PLAYER PROFILES

PITT STATE PLAYER PROFILES



ANDY SMITH

6-1 • 185 • Junior-1L • Guard
Dewey, Okla./Dewey High School

14

General: Fourth-year player... a hard-luck player who has battled a pair of knee injuries in his career... enjoyed a breakthrough sophomore season last year... brings a veteran presence to the Gorillas' backcourt... expected to play a key role at the point guard position for Pitt State this winter.

In 2008-09: Saw action in 24 games, including 12 starts... averaged 3.4 points and 1.6 assists per game on the season... converted 33.7 percent of his shots from the field (30 of 89), including 37.2 percent of his 3-point attempts (16 of 43)... scored a season-high 13 points in a road win vs. Truman (Jan. 28)... scored nine points and hit a season-best three treys vs. Central Missouri (Jan. 31)... dished out a season-high six assists vs. Washburn (Feb. 21).

In 2007-08: Missed the season due to injury (knee).

In 2006-07: Redshirt season.

In High School: A four-year All-Conference performer at Dewey High School... averaged 14.0 points, 6.5 assists and 3.0 rebounds per game as a senior for the Bulldogs... helped DHS to a pair of district, regional and area titles and a 44-11 combined record his final two seasons.

Personal: Born March February 3, 1988... son of Mark and Tammie Smith... a management major.

Smith's Game-by-Game Stats

2008-09						
DATE	OPPONENT	FGs	FTs	PTS	REB	
11/21	vs. Lincoln	0-2	0-0	0	2	
11/22	vs. Mid-America Christian	0-1	0-0	0	1	
11/24	SAINT MARY (Kan.)	0-1	0-0	0	0	
11/28	EVANGEL	0-0	0-0	0	1	
11/29	HENDERSON STATE	1-1	0-0	3	0	
12/3	at Missouri Western	1-2	0-0	3	0	
12/6	TRUMAN	0-1	0-0	0	0	
12/8	NEWMAN	0-0	0-0	0	0	
12/13	SOUTHWEST BAPTIST		DNP			
12/21	SOUTHWESTERN	3-7	0-0	8	2	
12/29	at Central Missouri		DNP			
12/31	NORTHWEST MISSOURI		DNP			
1/3	at Missouri Southern	0-0	0-0	0	0	
1/10	EMPORIA STATE	0-3	0-0	0	2	
1/14	at Washburn	2-4	2-2	7	0	
1/17	at Fort Hays State	0-0	0-0	0	1	
1/21	NEBRASKA-OMAHA	2-6	1-2	6	2	
1/24	MISSOURI WESTERN	0-2	0-0	0	0	
1/28	at Truman	6-12	0-3	13	3	
1/31	CENTRAL MISSOURI	3-7	0-0	9	2	
2/3	at Southwest Baptist	2-4	0-0	5	4	
2/7	at Northwest Missouri	0-3	0-0	0	1	
2/11	MISSOURI SOUTHERN	1-7	0-1	2	2	
2/18	at Emporia State	3-6	2-2	10	0	
2/21	WASHBURN	2-4	1-2	7	0	
2/26	FORT HAYS STATE	2-6	0-0	5	1	
2/28	at Nebraska-Omaha	2-10	0-0	4	3	

Smith's Career Highs

Points: 13

at Truman, 1/28/09

Rebounds: 4

at Southwest Baptist, 2/3/09

Assists: 5

at Northwest Missouri, 2/7/09

Steals: 2

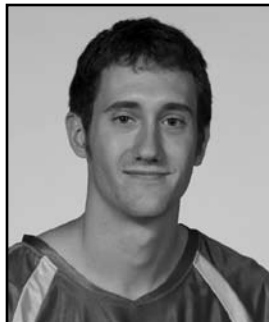
at Nebraska-Omaha, 2/28/09

Smith's Statistics at Pittsburg State

Year	G/GS	FGs	Pct	3ptrs	Pct	FTs	Pct.	Pts	Avg	Reb	Avg	Ast	Blk	Stl
2008-09	24/12	30-89	.337	16-43	.372	6-12	.500	82	3.4	27	1.1	37	2	4



PITT STATE PLAYER PROFILES



BRYAN CAMPBELL

22

**6-2 • 175 • Sophomore-SQ • Guard
Nevada, Mo./Nevada High School**

General: Third-year player... a promising backcourt prospect who continues to improve with experience... a hard worker who will look to provide a spark as a role player for the Gorillas again this year... **In 2008-09:** Saw action in five games in a reserve role... converted one of three shots from the field in limited action... **In 2007-08:** Redshirt season... **In High School:** A four-year All-Southwest Conference performer at Nevada High School, including a three-time first-team All-Conference honoree... averaged 15.1 points, 2.6 rebounds and 3.2 assists per game as a senior for the Tigers, earning co-MVP of the Southwest Conference... finished his prep career with 1,303 points... **Personal:** Born January 8, 1989... son of Doug and Judy Campbell... a member of the MIAA Academic Honor Roll... has a 3.086 GPA as a computer science major.

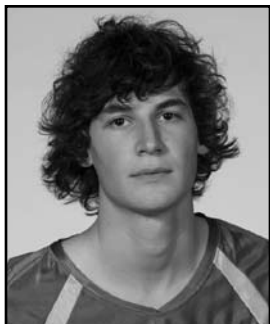


ZACH QUICK

12

**6-4 • 190 • Sophomore-SQ • Guard
Fort Scott, Kan./Fort Scott High School**

General: Third-year player... a promising backcourt player who continues to improve with experience... an intelligent player who will look to make more significant contributions for the Gorillas this winter... **In 2008-09:** Saw action in seven games in a reserve role... scored four points on the season... converted one of three shots from the field overall... also dished out four assists... **In 2007-08:** Redshirt season... **In High School:** A two-time Kansas Class 4A All-State performer at Fort Scott High School... a first-team All-State performer as a senior for the Tigers, averaging 15.7 points, 5.0 rebounds and 5.7 assists per game... helped FSHS to a 21-5 record and the Class 4A state runner-up finish last year... also a two-time unanimous first-team All-Southeast Kansas League performer... a member of two Class 4A state championship squads in 2004 and 2005... **Personal:** Born February 11, 1989... son of Phil and Jennifer Quick... a member of the MIAA Academic Honor Roll... has a 3.409 GPA as a management major.

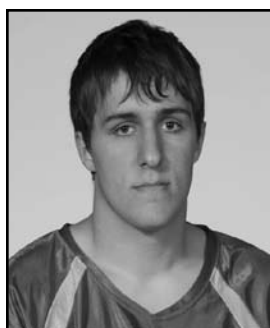


JORDAN EMBERS

6-5 • 205 • Freshman-RS • Guard
Louisburg, Kan./Louisburg High School

3

General: Second-year player... redshirted in his initial season in the Pitt State program... a promising wing player who made the most of his redshirt season... has good shooting perimeter shooting skills... will look to impact the Gorillas' lineup this season... **In 2008-09:** Redshirt season... **In High School:** A second-team Kansas Class 4A All-State performer as a senior at Louisburg High School in 2008... the Frontier League Player of the Year... averaged 21 points, six rebounds and three assists per game... converted 49 of 102 3-point field goals (.480)... a two-time All-League performer for the Wildcats... **Personal:** Born May 14, 1990... son of Rob and Lorra Embers... a management major.



TIM ENAYATI

6-3 • 195 • Sophomore-SQ • Guard
Diamond, Mo./Diamond High School

21

General: Second-year player... redshirted in his initial season in the Pitt State program... a promising backcourt prospect for the Gorillas... a hard worker who continues to improve with experience... will provide quality depth to the two-guard spot this winter... **In 2008-09:** Redshirt season... **In High School:** A first-team All-Spring River Valley Conference performer as a senior in 2008 at Diamond (Mo.) High School... averaged 19 points, 10 rebounds and four assists per game for the Wildcats... also an All-District and All-Area performer as a two-year starter at DHS... **Personal:** Born December 30, 1989... son of Ahmad Enayati and Tammy Henson... has a 3.206 GPA as a management major.



PITT STATE PLAYER PROFILES

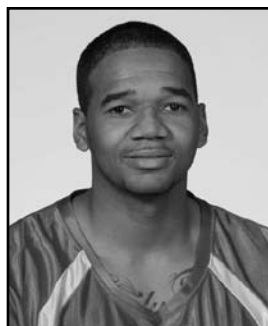


JOSH WALKER

6-8 • 250 • Freshman-RS • Forward/Center
Derby, Kan./Derby High School

55

General: Second-year player... redshirted in his initial season in the Pitt State program... made the most of his redshirt season... improved his overall fitness and strength greatly... a promising prospect who figures to compete for playing time in the Gorillas' frontcourt this winter... **In 2008-09:** Redshirt season... **In High School:** An honorable mention Kansas Class 6A All-State performer as a senior at Derby High School in 2008... averaged 11 points and eight rebounds per game for the Panthers last year... also an All-League performer and a two-year starter at DHS... **Personal:** Born May 6, 1990... son of Wayne and Kathy Walke... a member of the MIAA Academic Honor Roll... has a 3.172 GPA as a physical education major.

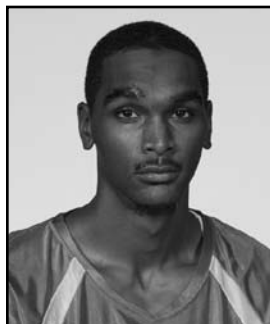


BRANDON COLEMAN

6-1 • 190 • Junior-TR • Guard
Kansas City, Mo./Highland Community College

5

General: Transfers to Pitt State after two seasons at Highland Community College... a talented shooting guard who figures to make an immediate impact in the Gorillas backcourt this winter... an enthusiastic player with good work ethic... **In Junior College:** Spent two seasons at Highland... earned first-team NJCAA All-Region VI honors as a sophomore for the Scotties in 2009, averaging 16.6 points, 4.6 rebounds, 2.5 assists and 1.5 steals per game... also converted 58 3-point field goals on the season... **In High School:** An All-State performer at North Kansas City High School... averaged 24 points, five rebounds and three assists per game as a senior for the Hornets... **Personal:** Born July 23, 1987... son of Anthony Jones and Lynn Coleman... a management major.



FRANCIS "MO" GUNN

6-4 • 195 • Junior-TR • Guard/Forward
Marlboro, Md./Garrett College

30

General: Transfers to Pitt State after one season at Garrett (Md.) College in the Washington, D.C., suburbs... a talented wing player who is active on both sides of the floor... a quick learner who is adjusting well to Pitt State's schemes... figures to impact the Gorillas' line-up this winter... **In Junior College:** Spent one season at Garrett... earned first-team All-Region and first-team All-Conference honors as a sophomore, averaging 15.8 points and 4.2 rebounds per game... played his freshman season at NCAA Division II Philadelphia University in 2006... **In High School:** A first-team All-State performer as a senior at C.H. Flowers High School in Seat Pleasant, Md. ... also an All-County and All-Metro pick... averaged 17 points, five rebounds and three assists per game for the Jaguars... **Personal:** Born March 30, 1987... son of Francis and Currie Gunn... an accounting major.



CLARENCE "CJ" MASTERS

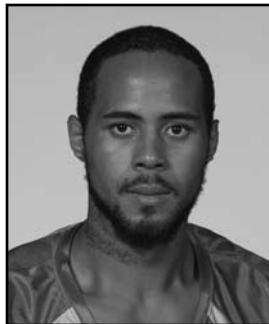
6-5 • 195 • Junior-TR • Forward
Cedar Hill, Texas/Southern University-Shreveport

0

General: Joins the Pitt State squad after a two-year absence from competitive ball... played his sophomore season at NJCAA Southern University at Shreveport in 2007 after signing with and playing at NCAA Division I Texas Christian University out of high school in 2006... a promising wing player who will look to make an impact for the Gorillas this winter... **At SU-Shreveport:** Averaged 13.7 points, 6.7 rebounds and 2.8 assists per game as a sophomore in 2007... transferred from TCU where he contributed 1.8 points and 1.4 rebounds per game as a freshman in 2006... **In High School:** Rated the No. 38 player in the state of Texas as a senior at Cedar Hill High School... helped Cedar Hill to a 35-2 record and the Texas Class 5A state runner-up finish in 2004... averaged 6.7 points and 4.4 rebounds per game his junior season... **Personal:** Born February 25, 1987... son of Helen Green... a communication major.



PITT STATE PLAYER PROFILES



QUINCY OWENS

6-8 • 230 • Junior-TR • Forward
Milwaukee, Wis./Hill College

23

General: Transfers to Pitt State after two seasons at Hill College in Hillsboro, Texas... inked with the Gorillas during the early signing period in November prior to his sophomore season... a talented frontcourt player who is expected to make an immediate impact for Pitt State this winter... **In Junior College:** Spent two seasons at Hill College... a second-team All-North Texas Conference (NTCAC) performer as a sophomore in 2009... averaged 11.9 points and 7.8 rebounds for the Rebels (coached by former PSU assistant coach Swede Trenkle), logging nine double-doubles on the season... also recorded 30 blocked shots (1.0 bpg)... averaged 11 points and eight rebounds per game as a freshman in 2008... **In High School:** A two-time All-State selection at Milwaukee's Eddison High School (2006-07)... also a two-time All-District performer... contributed 18 points and 11 rebounds per game during his senior prep season... **Personal:** Born June 4, 1987... son of Renee Owens... a physical education major.

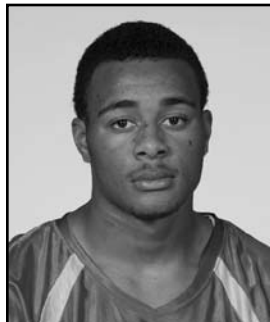


DARIAN KELLY

6-2 • 190 • Freshman-HS • Guard
Girard, Kan./Girard High School

33

General: A local product who comes to Pitt State after a stellar athletic career at nearby Girard High School... a versatile athlete who originally signed with the University of Kansas to play football out of high school... a talented guard who could see immediate action for the Gorillas if NCAA transfer rules don't require him to redshirt this year... **In High School:** A three-time Kansas Class 4A All-State performer at Girard High School... earned second-team All-State honors in each of his final prep seasons (2008-09), after earning first-team recognition his sophomore season (2007)... helped the Trojans to the 4A state runner-up finish his senior season... also an All-State performer in football at GHS... a three-time All-CNC League performer in basketball... **Personal:** Born October 12, 1990... son of Anthony and Jennifer Kelly... an undeclared major.



JaVON McGEE

6-5 • 225 • Freshman-HS • Forward
Kansas City, Mo./Grandview High School

44

General: Comes to Pitt State from Grandview (Mo.) High School... a talented prep athlete with tremendous upside... a strong player who could see action in the Gorillas' frontcourt this winter... **In High School:** An honorable mention All-Metro performer as a senior at Grandview High School... helped the Bulldogs to a 29-2 record and the Missouri Class 5A state runner-up finish in 2009... a three-year starter at GHS... also an honor roll student... **Personal:** Born September 16, 1991... son of Ellis III and Sharonne McGee... an undeclared major.



IAN PONDS

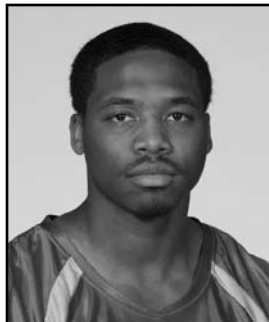
6-0 • 180 • Freshman-HS • Guard
Tulsa, Okla./Booker T. Washington High School

10

General: Joins the Pitt State squad after a stand-out prep career at Tulsa's Booker T. Washington High School... a promising guard prospect whose best basketball days are ahead of him... **In High School:** A first-team All-Conference performer at a senior at Booker T. Washington High School... helped the Hornets to a 23-4 record his senior season, averaging 12 points per game... helped Booker T. to a 20-5 record and a state runner-up finish as a junior in 2008... **Personal:** Born October 29, 1990... son of Archellus and Chiquita Ponds... a mechanical engineering technology major.



PITT STATE PLAYER PROFILES



JAMES ROBINSON

6-1 • 190 • Freshman-HS • Guard
Kansas City, Mo./Oak Park High School

32

General: Comes to Pitt State from Kansas City's Oak Park High School... a talented shooting guard... a promising prospect who could impact the Gorillas' line-up as a freshman this winter... **In High School:** A Missouri Class 5A All-State performer as a senior at Oak Park High School in 2009... averaged 17 points, three rebounds and three assists per game... a two-time All-District (2008-09) and three-time All-Conference performer (2007-09)... finished his career as the school's third-leading scorer with 1,189 points... **Personal:** Born August 29, 1990... son of James Robinson, Jr., and Denise Walker... an undeclared major.